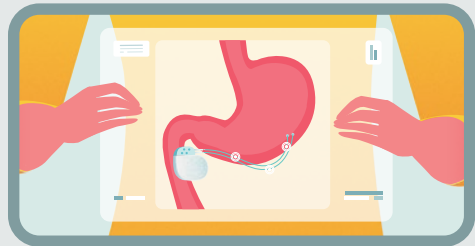
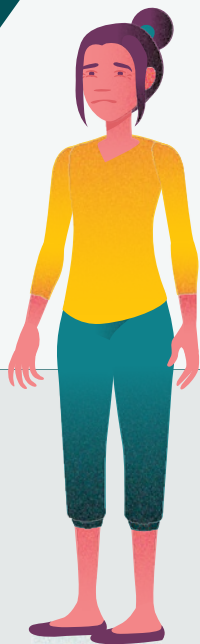


Take back your seat at the table.

GASTROPARESIS CAN TAKE AWAY MORE THAN COMFORT OR CONTROL OVER YOUR DAY, IT CAN TAKE AWAY YOUR APPETITE FOR LIFE.



Enterra® Therapy is the first and only device designed to relieve the nausea and vomiting associated with gastroparesis from diabetes or unknown origins by gently stimulating your stomach — a unique kind of therapy called Gastric Electrical Stimulation (GES).

Talk with an Enterra Medical Patient Liaison



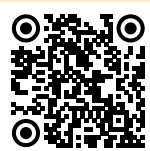
Our Enterra Medical Patient Liaisons are trained professionals with healthcare experience. They are here to help answer your questions about gastroparesis and Enterra Therapy.*

**You can reach them Monday to Friday,
8a.m. to 5p.m. Eastern Time at 1-855-768-3772.**

*The information provided is for general and educational purposes only and is not a substitute for professional medical advice, diagnosis or treatment. Always talk to your doctor about the best treatment options for your individual situation.

“Your staff was very helpful!
They educated me on
gastroparesis first, and then on
how the therapy works!”

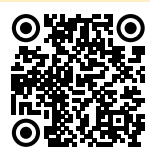
-Desirae



See if you're eligible for Enterra Therapy

Take a short survey to see if Enterra Therapy may be right for you and receive a discussion guide that will help you start a conversation with your provider.

enterramedical.com/candidate-screener/



Learn about gastroparesis and Enterra Therapy

See how Enterra Therapy works and how the procedure is done.

enterramedical.com/introduction-to-enterra-therapy

Over 15,000 people have received Enterra Therapy to help resume everyday activities, like taking their seat back at the table.



Important Safety Information

Intended Use: The Enterra® Therapy System is an implanted device that provides gastric stimulation to treat chronic, intractable, nausea and vomiting that is not well treated by drugs or other means in patients aged 18 to 70 years caused by diabetes or an unknown origin. **Contraindications:** Enterra Therapy is only for patients who are healthy enough for surgical procedures and/or anesthesia. Once implanted, patients need to avoid diathermy, which is deep heat treatment from electromagnetic energy, as it may cause injury or device failure. **Warnings:** Enterra Therapy has not been studied in pregnant women, patients under the age of 18, or over 70. Issues may occur if the system interacts with other implanted devices such as pacemakers. Patient injury or device failure may be caused by other medical treatments such as electrocautery, defibrillation/cardioversion, therapeutic ultrasound, or radiofrequency (RF)/microwave ablation. Patient activities may cause shocking or jolting sensations.



The Enterra II System is MR Conditional. This means that patients with the Enterra II System can safely have MRI examinations of some body parts under certain conditions. Consult your doctor to determine if you are eligible for MRI examination.

Risks: Potential risks include infection, pain at the surgery site, allergic or immune system response, lead and bowel twist together, device wearing through the skin, bruising, bleeding, loss of therapeutic effect, jolting, shocking, burning sensation, gastrointestinal or stomach issues, loss of therapy due to component failure or battery wear out, or perforated stomach which may cause life-threatening blockage or infections that require immediate medical attention including surgery. Risks can be minimized by avoiding activities such as sudden, excessive, or repetitive bending, twisting, bouncing, or stretching. **Humanitarian Device:** Authorized by Federal law for the intended use described above. The effectiveness of this device has not been demonstrated. Always discuss potential risks and benefits of the device with your physician. For further information, please contact Enterra Medical at info@enterramedical.com. Rx Only.

www.enterramedical.com

Enterra® is a registered trademark of Enterra Medical, Inc. in the US, EU, and other regions.

©2024 Enterra Medical, Inc. All rights reserved.

MKT-B-01777, Rev A

