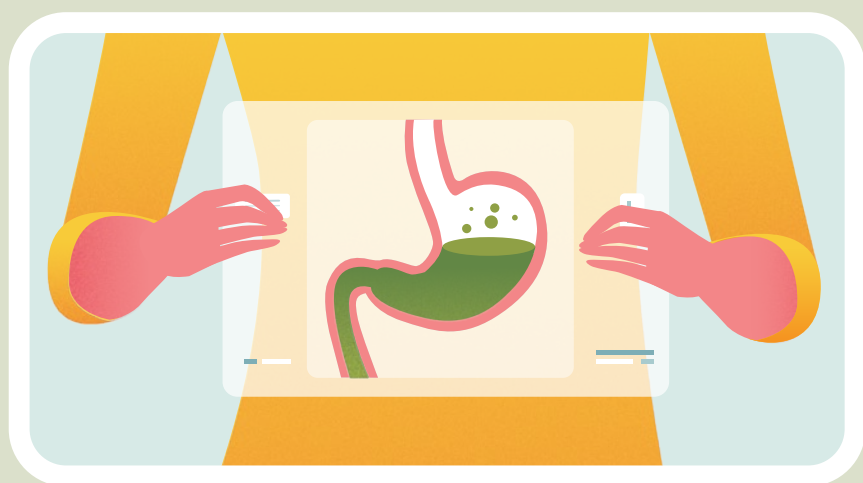


What is gastroparesis?



Gastroparesis is a medical condition that causes food to digest more slowly than normal.

Gastroparesis can be devastating and can significantly reduce quality of life.

GASTROPARESIS PATIENTS EXPERIENCE:



68%
Reduction in daily activities¹



29%
Lower annual income and higher rates of unemployment and underemployment¹



24%
Combined anxiety/depression¹

People experiencing gastroparesis face a challenge in finding relief from this chronic, debilitating condition:

5 YEARS

is the average number of years it took patients, in a recent study, to receive a diagnosis after symptoms began.²

LESS THAN HALF

of gastroparesis patients received pharmacologic treatment within 3 months of being diagnosed.²

ONLY 4%

of people surveyed with gastroparesis reported they are satisfied with current treatment options.²



Diet Changes



Medications

THE NEED TO HELP PEOPLE WITH GASTROPARESIS IS GREAT.

Although there is no cure for gastroparesis, there are therapies that improve symptoms and offer hope for a better quality of life. For those who are not able to find relief through diet modification and medications, gastric electrical stimulation (GES) with Enterra[®] Therapy, may be an option.

Enterra Therapy

Enterra Therapy is the first and only device designed specifically to relieve the nausea and vomiting associated with gastroparesis from diabetes or unknown origins by gently stimulating your stomach – a unique therapy called gastric electrical stimulation.



Minimally invasive



Customizable



Reversible

Scan the QR code to learn more about gastroparesis and treatment with Enterra Therapy.



1. Lacy BE, Crowell MD, Mathis C, Bauer D, Heinberg LJ. Gastroparesis: Quality of Life and Health Care Utilization. *J Clin Gastroenterol*. 2018;52(1):20-244.doi:10.1097/MCG.0000000000000728.

2. Yu D, Ramsey FV, Norton WF, et al. The Burdens, Concerns, and Quality of Life of Patients with Gastroparesis. *Dig Dis Sci*. 2017;62(4):879-893. doi:10.1007/s10620-017-4456-7.

Important Safety Information

Intended Use: The Enterra[®] Therapy System is an implanted device that provides gastric stimulation to treat chronic, intractable, nausea and vomiting that is not well treated by drugs or other means in patients aged 18 to 70 years caused by diabetes or an unknown origin. **Contraindications:** Enterra Therapy is only for patients who are healthy enough for surgical procedures and/or anesthesia. Once implanted, patients need to avoid diathermy, which is deep heat treatment from electromagnetic energy, as it may cause injury or device failure. **Warnings:** Enterra Therapy has not been studied in pregnant women, patients under the age of 18, or over 70. Issues may occur if the system interacts with other implanted devices such as pacemakers. Patient injury or device failure may be caused by other medical treatments such as electrocautery, defibrillation/cardioversion, therapeutic ultrasound, or radiofrequency (RF)/microwave ablation. Patient activities may cause shocking or jolting sensations.

MR The Enterra II System is MR Conditional. This means that patients with the Enterra II System can safely have MRI examinations of some body parts under certain conditions. Consult your doctor to determine if you are eligible for MRI examination.

Risks: Potential risks include infection, pain at the surgery site, allergic or immune system response, lead and bowel twist together, device wearing through the skin, bruising, bleeding, loss of therapeutic effect, jolting, shocking, burning sensation, gastrointestinal or stomach issues, loss of therapy due to component failure or battery wear out, or perforated stomach which may cause life-threatening blockage or infections that require immediate medical attention including surgery. Risks can be minimized by avoiding activities such as sudden, excessive, or repetitive bending, twisting, bouncing, or stretching. **Humanitarian Device:** Authorized by Federal law for the intended use described above. The effectiveness of this device has not been demonstrated. Always discuss potential risks and benefits of the device with your physician. For further information, please contact Enterra Medical at info@enterramedical.com. Rx Only.

www.enterramedical.com

Enterra[®] is a registered trademark of Enterra Medical, Inc. in the US, EU, and other regions.

©2024 Enterra Medical, Inc. All rights reserved. MKT-D-02267, Rev A

enterra
medical™